

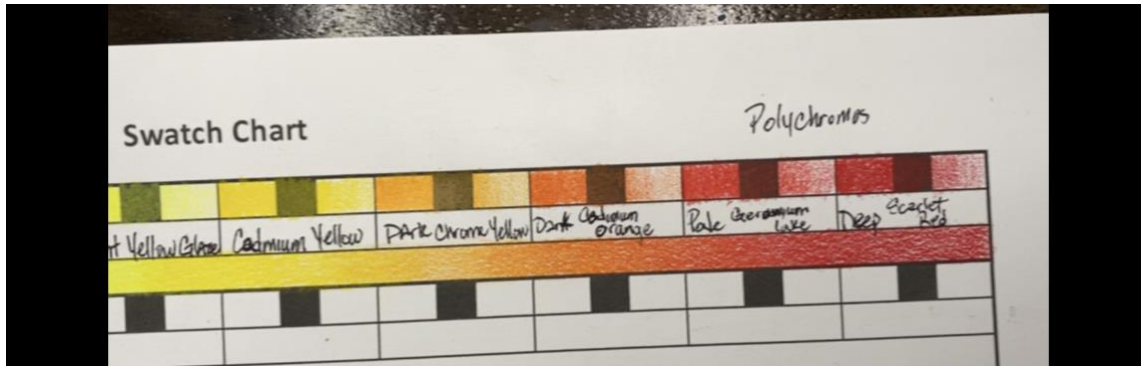
COLOR SWATCH

Get to know your colors

Phrankie's Practice Corner Swatch Guide

WHY I SWATCH

There are many reasons why artist swatch their media. I have to say that I was not a fan at first in the swatching process because I saw it as a daunting task. I was always just so excited to get going on a project or start using new pencils that I never took the time to really understand how the new medium worked. I started my artistic journey using colored pencils and I thought all colored pencils were the same. Clearly, they are not. Taking time to understand each brand and color has great advantages of saving me time and being more creative. Let me explain what I mean.



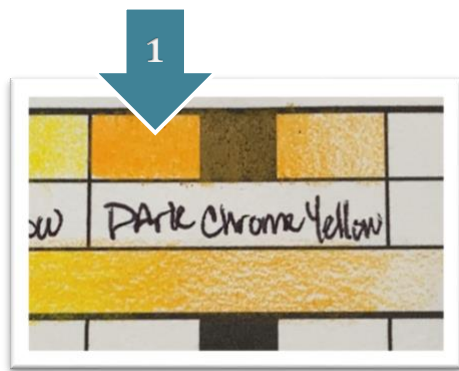
When I swatch now there are a few things that are important to me to learn about that particular medium. I am looking for how the pencil or paint acts on the paper and trying on several types of paper I typically use. I didn't realize how different each pencil behaves on smooth paper or cold press paper or even cotton paper. I had pencils I thought were horrible, but I found that they produced the most amazing results on a rough textured paper. I also look for what the true color will look like, because the color on the barrel of the pencil or the color on the tube of paint isn't necessarily what I see when it gets on the paper. Finally, what I want to understand is how the colors will blend. I really enjoy layering colors and blending them together. I typically will layer the colors to see how much pressure is needed to blend for nice transitions. All artists swatch differently and have different things they are looking for, but I am happy to share my current tool and how I use it. Feel free to morph it into whatever works for you.

How to use my swatch template

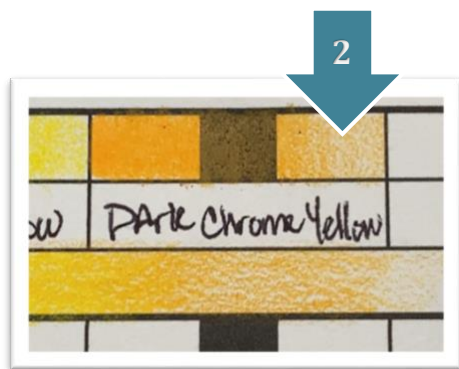
I use this grid to help me see how the medium works for how I like to work. There are a few things I am interested in:



- Pressure - how the color looks with full pressure and light pressure
- Opacity - how opaque the color is for layering
- Blending by layers - and how well it will layer with other colors. I enjoy layering colors on top of each other



1. I fill in the first box with the hardest pressure I can muster and I do the same over the black box. This helps me see the true color in its most saturated form and how opaque the color is over dark colors. Tip: to apply good pressure choke up on the pencil to get consistent pressure into the grooves.



2. In this box I use light pressure. The typical pressure I normally work at. On the left side of this box I put down 2 or three layers to see how easy the color fills in the tooth of the paper.



3. I blend the color next to it with my current color with light layers of each color
4. Finally I write in the name of the color. Sometimes I also make marks for light fastness or other notes I think are important about the color.

Swatch Chart

